

Winter 2016



Tŷ-Mawr

www.lime.org.uk



Sustainable building materials for healthier homes
Deunyddiau adeiladu cynaliadwy ar gyfer cartrefi iachach



Products

Manufacturers & suppliers of:

- Traditional Fat Lime Mortars and Plasters.
- Limewashes and Pigments.
- **glaster**® - Plasters and Mortars.
- ecoCork Insulating Lime Render.
- **NEW** - Fibrelime® Insulating Lime Render.
- Natural Insulation including Tŷ-Mawr Thermafleece® sheep's wool, Thermafleece hemp, Thermafleece Supaloff®, Homatherm FlexCL® recycled newspaper-based batts.
- Full range of Singleton Birch (Secil), St Astier and Hanson Hydraulic Limes and Premixed Lime Products.
- Wide range of natural, breathable paints for internal and external walls and woodwork.
- Building boards/plaster carriers including Reed Mats, Reed Boards, Celenit Wood Wool Boards and Homatherm Woodfibre Boards.
- Specialist stone repair mortar (Lithomex) and decorative/polished plaster (Decoliss)
- Proclima airtightness solutions
- Laths, Wattle and Battens.
- Tools and Books.

Services

- Site visits with condition reports and problem identification.
- Product support
- Established courses
- Product information days
- RIBA-accredited CPD seminars
- Historic Research, Consultancy and Heritage Asset advice
- Site supervision and bespoke training
- Visits to Tŷ-Mawr farm for interested groups
- Venue hire
- Lake-side camping
- Kitchen Garden (see www.thekitchengarden.co.uk)

Sustainable Insulation Systems - LABC Registered

- Insulated Limecrete Sublime® floors
- Warm roof systems for new build and renovation / conservation projects.
- Internal and external wall insulation systems for new build and renovation / conservation projects.
- New timber-frame wall systems
- **NEW** - Tŷ-Mawr Insulated Foundation System (not yet LABC registered)

Building on firm (green) foundations!

We are pleased to announce our latest innovation - the Tŷ-Mawr Insulated Foundation System for domestic housing and commercial buildings.

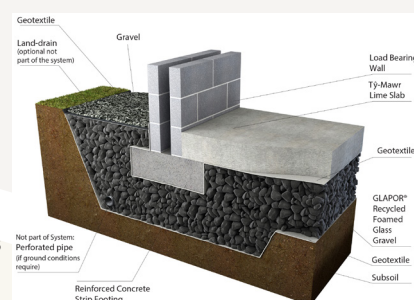
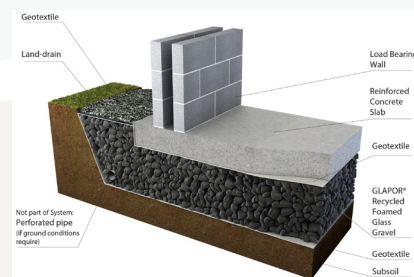
The Tŷ-Mawr Insulated Foundation System uses 100% recycled foamed glass gravel to construct a load bearing, thermally insulated foundation system. It is a simple, fast, construction, offering substantial time advantages with high insulation values and cost savings, as well as being environmentally friendly.

Tŷ-Mawr has used Glapor® Recycled Foamed Glass extensively throughout the UK as an insulating, structural base in their highly successful Sublime® flooring system. The foundation system is a natural progression from Sublime®, the main difference is the limecrete slab in the Sublime® system is replaced with a reinforced concrete slab to take the extra loadings encountered in holding a whole building, so is ideal for most types of construction and has been rigorously assessed by Structural Engineers, Price & Myers.

David Chambers, Tŷ-Mawr UK Sales Manager said, "This is very exciting for Tŷ-Mawr and gives a real alternative to specifiers and builders when it comes to foundations. Glapor® RFG can reach passive house standards of insulation without the use of any other products".

To find out more about the system, email: david.chambers@lime.org.uk

tŷ-mawr
insulated foundations system



Joyce treks again!

Once again Joyce, our intrepid Managing Director, is lacing up her walking boots to raise money for Velindre Cancer Centre - this time with a trek through Peru to the lost city of Machu Picchu!

When asked why she's taking up another challenge, Joyce said:

"In 2015, I undertook a trek through Patagonia to raise funds for Velindre. It was beautiful and extraordinary, I think about it nearly every day, but the highlight for me came on the last night, as the 50 of us sat together, exhausted and then we heard that we had raised over £530,000 - it blew us away - it was so emotional and truly humbling to see just what is possible, when people step out of their busy lives for a while and put their minds together to do something like this.

I could not wait to keep in touch with Velindre and find an opportunity to help again. I am fortunate to have the support of family, friends, and colleagues, to be able to undertake this trek through Peru and start the rather daunting fund-raising process all over again as well as the training to walk at altitude for the first time! I will walk in memory of family and friends who have lost their battle with cancer as well as those who are fighting it now."



If you would like to help Joyce reach her target for this amazing charity, or just want to find out more about the trek, visit the following websites:
<https://mydonate.bt.com/fundraisers/joycemorgan-gervis1>
www.velindrefundraising.com/peru2017



Distribution warehouse: Units 5 and 12, Brecon Enterprise Park, Brecon, Powys LD3 8BT Tel: 01874 611350 Fax: 01874 622774 Training and Manufacturing: Tŷ-Mawr, Llangasty, Brecon, Powys LD3 7PJ



COURSES AND EVENTS

An Introduction to Lime & Lime Plastering course

16-17 March
22-21 April
11-12 May
8-9 June
10-11 August
14-15 September
5-6 October
9-10 November
7-8 December

Limecrete Day 19 April

Decorative Plastering 10 May

Drystone Walling 15-16 June

Introduction to Thatching 19 July

Get Growing Days - NEW

10 April; 10 June

EVENTS - SEE US AT:

National Botanic Gardens of Wales 7 January

Healthy Buildings Conference & Expo 15 February

EcoBuild 7-9 March

Homebuilding & Renovating Show, Birmingham NEC

23-26 March

Royal Welsh Show 24-27 July

Greenman Festival 17-20 August

Historic Buildings Parks & Gardens Event 14 November

PERU TREK FUNDRAISERS*

Coastal Walk 25-26 February

Walking with Wildlife 18 March

Campfire & Campover 27-28 May

Yorkshire Three Peaks Challenge

12-13 August

Peru Trek 13-23 September

*TBC

Courses & CPDs

2016 has seen another full year of courses with over 200 delegates attending from across the UK. We have been delighted to also deliver bespoke courses for the Welsh School of Architecture as well as a number of high schools from South Wales and two, week long courses, for the Landmark Trust at the Grade I listed medieval hall house Llwyn Celyn - a programme that continues into 2017

Technical Director, Nigel Gervis, has been busy delivering RIBA accredited CPD talks to some of the UK's top architects and industry professionals throughout the year including one on-site at the Grade I listed Chettle House, hailed by Pevsner as 'the plum among Dorset houses of the early 18th century, and even nationally outstanding as a specimen of English Baroque'. Please contact us if you would like at CPD at your offices or on-site.

HIGHLIGHTS

Tŷ-Mawr was pleased to host the Historic Farm Buildings Conference on Saturday 3rd September.

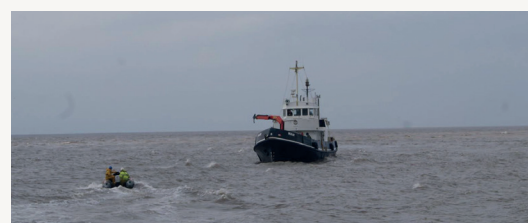
Sam Hale, Tŷ-Mawr's building consultant organised a visit to Llwyn Celyn on Friday the 2nd and together with Jeremy Lake of Historic England organised the Saturday programme of talks and visits to local farmsteads including Sam's own 17th century Welsh longhouse which has been sensitively renovated with Tŷ-Mawr products.

Talks came from the building preservation trust, ABC, Richard Suggett of the Royal Commission and Ned Scharer of the Natural Building Centre.

September also saw Tŷ-Mawr host the Annual Plasterers Gathering with inspirational talks and demonstrations from plasterers across the UK and abroad covering everything from insulating plasters to decorative Jacobean work and pargetting.



An unusual day out of the office!



A request for Tŷ-Mawr's consultancy services at the beginning of October, resulted in a rather unusual day out for Sam Hale!

His services were needed to advise on the re-rendering of a solar-powered Trinity House 18th century lighthouse on Flat Holm island, just off the coast of Wales, in the Bristol Channel.

Hydraulic limes and natural/Roman cements should be used for lighthouses due to their resistance to seawater and salt laden fog which can attack modern Ordinary Portland Cement.

If you need advice on an unusual project that potentially uses our products or if you feel you could benefit from a site visit, please email: sarah.johnson@lime.org.uk or call 01874 611350 - our team are passionate about all sorts of buildings and would welcome the opportunity to help!

No delivery too tough for Tŷ-Mawr!

At the end of November, Tŷ-Mawr received an order which needed a very special delivery! Paddy, the owner/driver of Talgarth Transport, stepped up to the plate, to help at the Canalside Heritage Centre, Beeston Rylands.

The delivery of one of our Sublime® floors needed to be offloaded on to a barge, towed across the canal and offloaded on the other side.

The Heritage Centre is renovating the lock cottages and turning them in to four units, which will include a museum/educational resource and learning centre and a community cafe. For more information please visit: www.canalsideheritagecentre.org.uk



Tŷ-Mawr's Celenit Acoustic Panels

Limiting echoes in crowded public establishments whether bars, restaurants, sporting arenas, multipurpose rooms, or schools, is very important to enjoying the activities held therein. Tŷ-Mawr's Celenit acoustic panels can help in two ways.

Sound Reverberation within a Room: Celenit panels can be classified as natural sound absorbers. The open face of the panel allows sound waves to enter, the sound energy is then dissipated through the cellular structure of the panel progressively reducing sound energy.

They have a good level of sound absorption especially at higher frequencies (acute tones) which are the most common ones. Sound wave absorption increases with panel thickness, this can be further enhanced by using a layer of Thermafleece® sheep's wool insulation behind the panel and by leaving an air gap. Dimensional stability, even in areas of high humidity, coupled with high mechanical strength make it suitable for heavy duty use in areas such as swimming pools, gyms, schools, and industrial buildings.

Sound Insulation Between Rooms: Celenit panels applied to exterior walls or internal partition

walls then plastered over considerably improve sound insulation between rooms and help reduce sound coming into the building, even at the most disturbing medium and low frequencies.

The features that distinguish Celenit from low density insulation materials and make it an efficient sound insulator are: high mass, open cell structure, low bending resistance, high internal sound absorption. Panels can be easily fixed to the wall with expansion screws, finished with lime plasters and are suitable for new build or refurbishment.

Tŷ-Mawr's Celenit acoustic panels are available in several different sizes and a range of attractive colours, contact us to find out more.



Saving money - the natural way!

Our Tŷ-Mawr Thermafleece® sheep's wool insulation is proving very popular for local company Modulog, who are using it to insulate their Shepherd's Huts. The insulation keeps the huts naturally warm in winter and cool in summer.

It has many other environmental and technical benefits, for further information email us at: tymawr@lime.org.uk or visit our website www.lime.org.uk – where you will find our handy insulation calculator to help you to calculate just how much you require and the likely cost. Remember, according to the Energy Saving Trust, insulating your loft will save you £240* per annum!

If you would like to find out more about these cosy huts please visit: www.modulog.co.uk

*Figure obtained from the Energy Saving Trust and based on an average detached house in England, Scotland and Wales. For more figures see: www.energysavingtrust.org.uk. Image courtesy of Modulog.

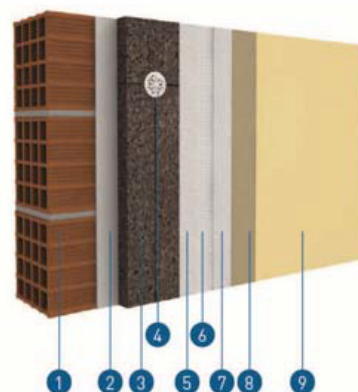


A little extra peace of mind

We are delighted to represent Secil in the UK promoting and supporting their LABC (Local Authority Building Control) registered cork insulation system for internal and external wall insulation applications.

The system now carries an LABC (Local Authority Building Control) Warranty for extra peace of mind.

Our other systems will follow in 2017.....why not 'like' our facebook page to keep up to date with developments.



LEGEND

- 1 Substrate
- 2 ADHERE Vit ecoCORK
- 3 Cork Insulation Panel
- 4 SecilVit Anchor
- 5 ADHERE Vit ecoCORK
- 6 SecilVit Mesh 160
- 7 ADHERE Vit ecoCORK
- 8 REABILITA CAL Acabamento (Finishing)
- 9 SecilTEK ad 25 (Primer)
+ SecilTEK SP 01 (Silicate based paint)

NOW IN STOCK - Fibrelime® an innovation in lime plastering



Fibrelime® is a traditional lime based plaster with innovative fibres enabling a range of finishes from smooth to textured to be readily achieved.

As a lime putty product Fibrelime® has full breathability and can be used internally and externally and is suitable for a comprehensive

range of background building materials on historic and new build structures, from a 3mm skim coat to a 30mm one-coat render or plaster.

If you are interested in a practical seminar on this innovative product – please email Sarah.Johnson@lime.org.uk to express your interest or visit our website for more news!

WINTER GUIDANCE

If you haven't already, a gentle reminder that as with all good building practice using any mortars, plasters/renders and paints, protection should be provided against all that the Winter weather brings.

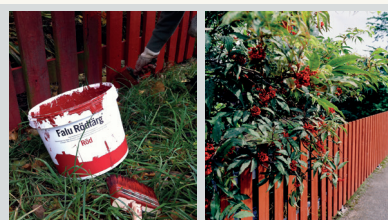
Please visit www.lime.org.uk or ring us on 01874 611350 to discuss how our Mortar Fleece, Geotextile or Bubblewrap can help to provide Winter protection.

WASTE NOT, WANT NOT

Back in November, Tŷ-Mawr was pleased to donate some of their ecological paint to a wonderful initiative - Community RePaint!

Each year over 300 million litres of paint are sold in the UK. Of this, it is estimated that approximately 50 million litres are unused, stored in homes or garages or just thrown away. That's enough paint to fill 20 Olympic-sized swimming pools! Community RePaint see 'waste paint' as a resource and so encourage donations of leftover paint so that people/businesses can help the environment and their local community.

For more information on the Community RePaint scheme visit their website www.communityrepaint.org.uk



Painting Britain Red (and Black)

Since we started stocking Falu Rödfärg in August we've sold over 230 litres!

To find out more about this traditional Swedish linseed oil paint which is ideal for fences & stables, see our website: www.lime.org.uk and order some today!

Kara Jones
Integrated Systems
and Improvement
Manager



Hitting the high street!

Our thanks also go to Sally Griffiths and the Chamber of Trade, for giving us the opportunity to partake in this great initiative and to Penpont for the beautiful, locally grown Christmas tree!

www.penpont.com

Celebrating sustainability excellence, innovation and leadership across Wales

With over 11,300 individual votes by the public, it clearly demonstrated the level of interest in Wales and the innovative and inspirational people, projects and organisations that are leading in the field of sustainability. Tŷ-Mawr was runner up to Principality stadium – a great achievement – thank you to all those who voted for us!



GWOBRAU | SUSTAIN
CYNNAL | WALES
CYMRU | AWARDS

Tŷ-Mawr sees the light...

The car will be charged with energy produced by PV (Photovoltaic) panels that will be installed at Tŷ-Mawr in the New Year, and will add to the savings already made through the installation of the biomass heating system, solar thermal panels, rainwater harvesting and the kitchen garden growing food to organic principles for the family and course delegates.



2016 Christmas arrangements

With our sincerest best wishes for a Happy Christmas and a successful green New Year! Nigel, Joyce and all at Tŷ-Mawr Lime.



Hello & Goodbye...



We were also very sad to say goodbye to **Stephen Humphreys** and **Geraint Forsyth**, but wish both of them well for the future.



Find us on Facebook, LinkedIn, Twitter, Pinterest, or visit our ebay shop.

Caring for the future, respecting the past... www.lime.org.uk