

Baumit PremiumPrimer

Ready to use primer

General Information



- **Regulates absorption**
- **Improves colour**
- **Superior quality primer**

Product Overview

Ready to use, acrylic based, waterborne quartz filled liquid primer for all Synthetic and mineral decorative finishes with high covering power. Hand application for external areas.

Use

Primer for preparing surfaces of mineral substrates. To equalize suction of substrates and improve adhesion of subsequent mineral and synthetic decorative of Baumit topcoat renders.

Composition

Organic binders, silicone-based additives, fillers, additives and water..

Properties

- Reduces and equalizes substrate suction to improve the curing and strength development of subsequent coatings as well as colour uniformity.
- High pigment concentration produces a coloured equalisation of the substrate. Improves adhesion to substrates. Enhances the hydrophobic qualities of the background.
- Does not inhibit water vapour diffusion through the substrate. Free from solvents.

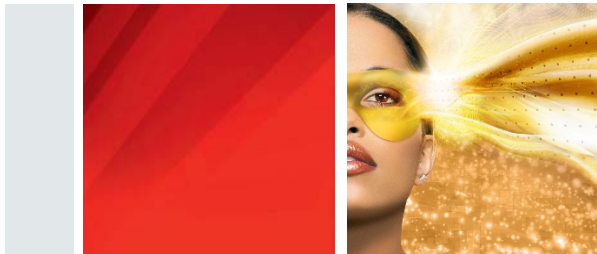
Technical Data

Condition state:	Liquid
Colour:	White (also available coloured)
Solids content:	60% approx.
VOC content:	< 30 g/l approx. (complies with EI limitations)
Density:	1470 kg/m ³
pH-value:	approx. 8.5

Yield:	100 – 125 m ² /25 kg bucket (on basecoat)
Consumption kg/m² :	0.2 – 0.25 (on basecoats)

Packaging

25 kg bag. 1 pallet = 24 bags = 600 kg



Baumit PremiumPrimer

Ready to use primer

Health & Safety

A Material Safety Data Sheet is available on request

Quality Assurance

Continual monitoring and inspection of the quality of all raw materials upon reception. The manufacturer has a TÜV tested and certified Quality Management System in accordance with the international standard EN ISO 9001 and a TÜV tested and certified Environmental Management System in accordance with the international standard EN ISO 14001.

Storage

Store in dry conditions and protect from UV radiation (direct sunlight), moisture and mechanical damage.

Substrate

Substrates must be sound, clean, dry, free from frost, dust, and efflorescence and not hydrophobic.

Suitable substrates:

- Mineral based contact mortars, lime and cement renders, concrete.
- Well bonded mineral, silicate and dispersion paints and coatings.
- Gypsum plasterboards (pretreated with Baumit SperrGrund).

■ Application

Mixing:

Baumit PremiumPrimer must be well and slowly mixed with an electric hand mixer before application. Do not mix with other materials. Where required a minimal amount of water (5%) may be added to improve workability.

Apply the Baumit PremiumPrimer in a full and even coat with a roller or brush. Apply systematically and continuously in complete sections. Allow 24 hours drying time before applying further coatings.

■ General Information

The air, material and background temperature must be above +5°C and below +30° C during application and curing. Protect the facade from direct sunlight, rain and strong winds (i.e. with scaffold nets).

High air humidity and low temperatures can prolong drying times considerably.

Protective measures:

Protect eyes and skin, and surrounding areas, especially glass, ceramic, brick, natural stone, varnishes and metals. Wash away any splashes with plenty of water. Do not allow to dry and harden. Clean tools and equipment thoroughly with water immediately after use.

Do not dispose of into the ground, waterways, drains or canals.

Our recommendations for applications which we give to support the purchasers/handlers from our experience, corresponds to current science and practice. The advice is non-binding, and forms no contractual, legal relationship and no additional obligations in the purchase contract. The advice does not release the purchaser from examining our products for their suitability for their foreseen uses. The general rules of construction equipment must be adhered to. We reserve the right to make changes which serve to provide technical progress and improve the product or its use. When such technical information appears, earlier information is no longer valid. You can find the most current information on our Internet pages. Only our current sales and supply conditions as well as provisions for the placement and use of our silos and mixing facilities apply for all business cases.