



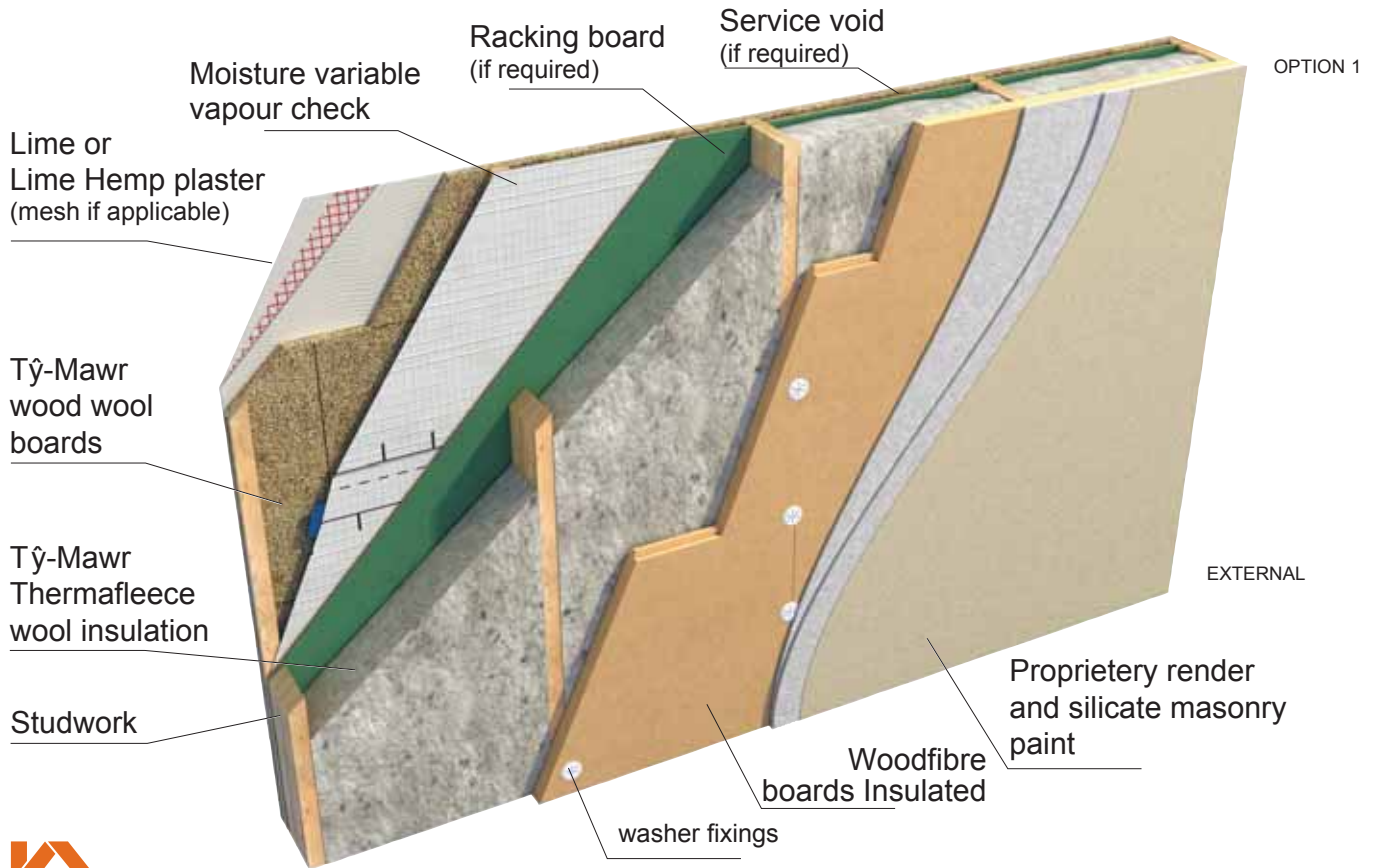
Courtesy: D Morgan

Tÿ-Mawr's LABC Registered timber frame system

Tÿ-Mawr's new timber-frame wall system are part of our innovative new range of LABC registered sustainable building solutions. In addition to their superb thermal and acoustic performance, their vapour permeability properties helps them to regulate humidity within the building contributing to a more comfortable and healthy

living environment. This system is an ideal solution for new timber-frame builds.

The Tÿ-Mawr registered systems offer a choice of high quality, ecological and sustainable insulation materials, see options in table below.



© Copyright Tÿ-Mawr Lime Ltd, 2017

Option 1 Paint finish, Render system		Option 2 Timber Clad (weather boarding)	
Woodfibre T&G board 40mm fixed with insulated washer fixings at minimum of 8 per m2		Woodfibre T&G board 20mm fixed with battens	Woodfibre T&G board 40mm fixed with battens
140mm of Insulation chosen from below	100mm of Insulation chosen from below	140mm of Insulation chosen from below	100mm of Insulation chosen from below
Tÿ-Mawr Thermafleece Cosywool Rolls or Batts/Ultrawool/Hemp/Holzflex/Flex CL			
Racking Board - Panelvent (or similar if required)			
Moisture variable vapour check (if required)			
Services void 20mm (if required)			
Tÿ-Mawr 25mm Wood Wool board fixed with approved washers at 8 per m2			
Tÿ-Mawr Basecoat for boards 1 x 6mm meshed basecoat (or lime hemp) and 1 x 3mm Premixed Topcoat plaster			
Vapour permeable Paint Finish - Internal Silicate Paint, Plant-based Emulsion, Tÿ-Mawr Limewash, Clay Paint			

Contact us for u-value calculations, condensation risk analysis and quotations. Please note that LABC registered detail only applies where Tÿ-Mawr has designed the build-up (free of charge) and supplied the materials.

© Copyright - please do not infringe our copyright by copying or reproducing any part of this document.

Disclaimer - no responsibility can be accepted for any errors or omissions or any loss or damage as a result of using the information provided in these guidelines.

Distribution warehouse: Unit 12, Brecon Enterprise Park, Brecon, Powys LD3 8BT Tel: 01874 611350 Fax: 01874 658502 Email: tymawr@lime.org.uk www.lime.org.uk

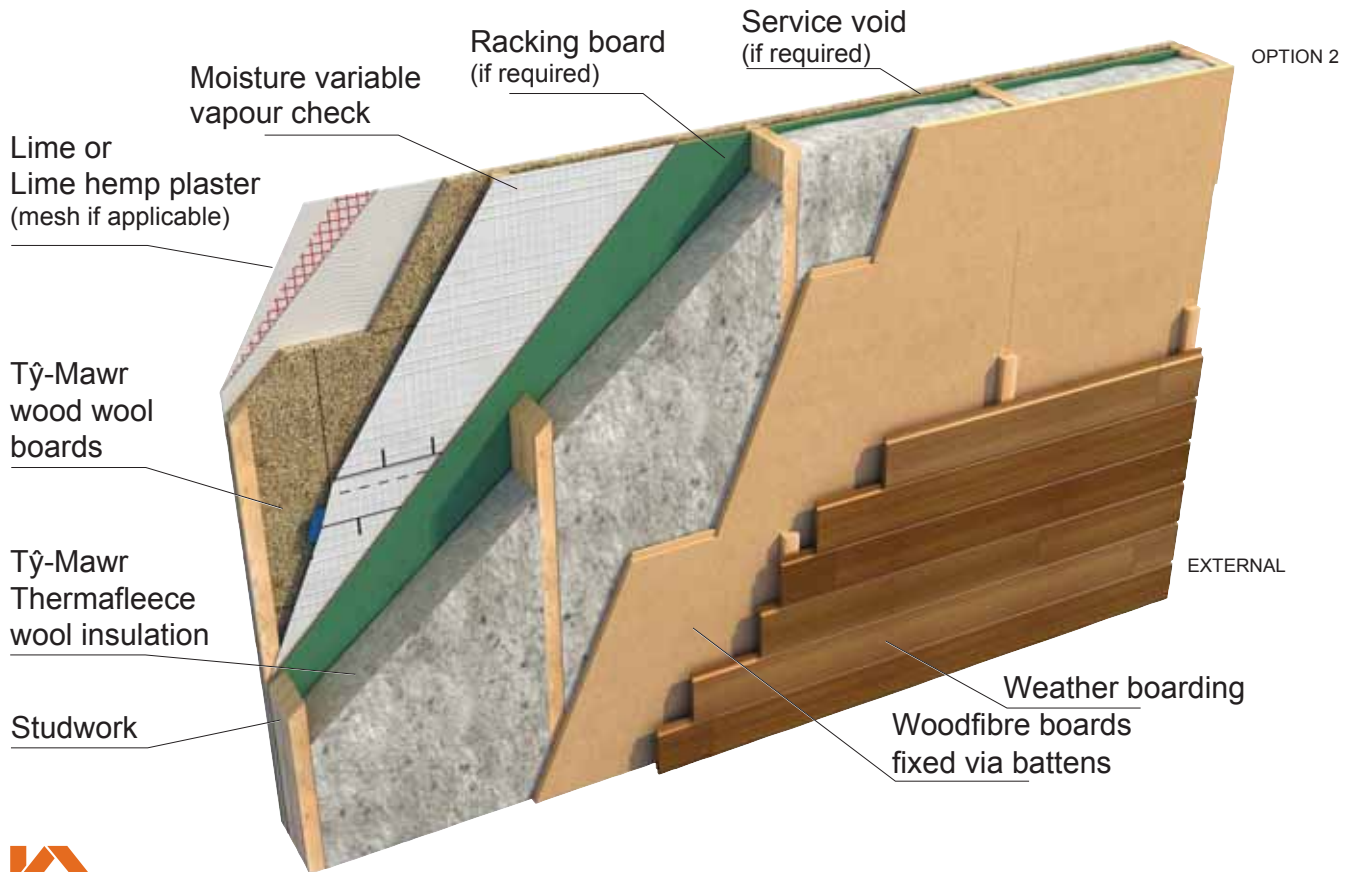


Tÿ-Mawr



Timber frame extension with glaster® finish

Tŷ-Mawr's LABC Registered timber frame system



© Copyright Tŷ-Mawr Lime Ltd, 2017

Option 1 Paint finish, Render system		Option 2 Timber Clad (weather boarding)	
Woodfibre T&G board 40mm fixed with insulated washer fixings at minimum of 8 per m2		Woodfibre T&G board 20mm fixed with battens	Woodfibre T&G board 40mm fixed with battens
140mm of Insulation chosen from below	100mm of Insulation chosen from below	140mm of Insulation chosen from below	100mm of Insulation chosen from below
Ty-Mawr Thermafleecce Cosywool Rolls or Batts/Ultrawool/Hemp/Holzflex/Flex CL			
Racking Board - Panelvent (or similar if required)			
Moisture variable vapour check (if required)			
Services void 20mm (if required)			
Ty-Mawr 25mm Wood Wool board fixed with approved washers at 8 per m2			
Ty-Mawr Basecoat for boards 1 x 6mm meshed basecoat (or lime hemp) and 1 x 3mm Premixed Topcoat plaster			
Vapour permeable Paint Finish - Internal Silicate Paint, Plant-based Emulsion, Ty-Mawr Limewash, Clay Paint			

Contact us for u-value calculations, condensation risk analysis and quotations. Please note that LABC registered detail only applies where Tŷ-Mawr has designed the build-up (free of charge) and supplied the materials.

© Copyright - please do not infringe our copyright by copying or reproducing any part of this document.

Disclaimer - no responsibility can be accepted for any errors or omissions or any loss or damage as a result of using the information provided in these guidelines.

Distribution warehouse: Unit 12, Brecon Enterprise Park, Brecon, Powys LD3 8BT Tel: 01874 611350 Fax: 01874 658502 Email: tymawr@lime.org.uk www.lime.org.uk



Tŷ-Mawr