

Cork House

nimtim architects

Photography by Megan Taylor



PROJECT DATA

Start on site March 2018
Completion December 2018
Gross internal floor area
98m² (refurbishment and new area)
Construction cost approx £150,000
Architect nimtim architects
Client Private
Structural engineer SD Structures
Approved building inspector
Wilkinson Construction Consultants
Main contractor TW Space Conversions
CAD software used AutoCAD



PROJECT DESCRIPTION

This project consists of a loft conversion and ground floor extension, clad internally and externally with cork, to a small two-bedroom terraced property in south London.

Ground level at the front of the house is 1m higher than the garden level. In order to connect the two levels, a stepped internal landscape was created that defined different uses within a larger family space through changes in floor level, so each zone is defined by its own datum.

The extension is articulated as a simple pitched roof form with a large pivot door framing an uninterrupted view of the garden. The simple roof form rationalises a more complex geometry of ceiling heights and structure that deals with existing elements internally while reflecting the character of the house externally.

The house, including a new master bedroom and en-suite at loft level and a renovated first floor is defined by bold colours and patterns. Pink window frames provide a flash of colour against the cork, while internally a pale grey resin floor finish provides a visually continuous surface over horizontal and vertical surfaces.

The process of co-design has created a bold and playful new home that the family has embraced and celebrated as something that they created with us.
Nimi Attanayake, founding director, nimtim architects

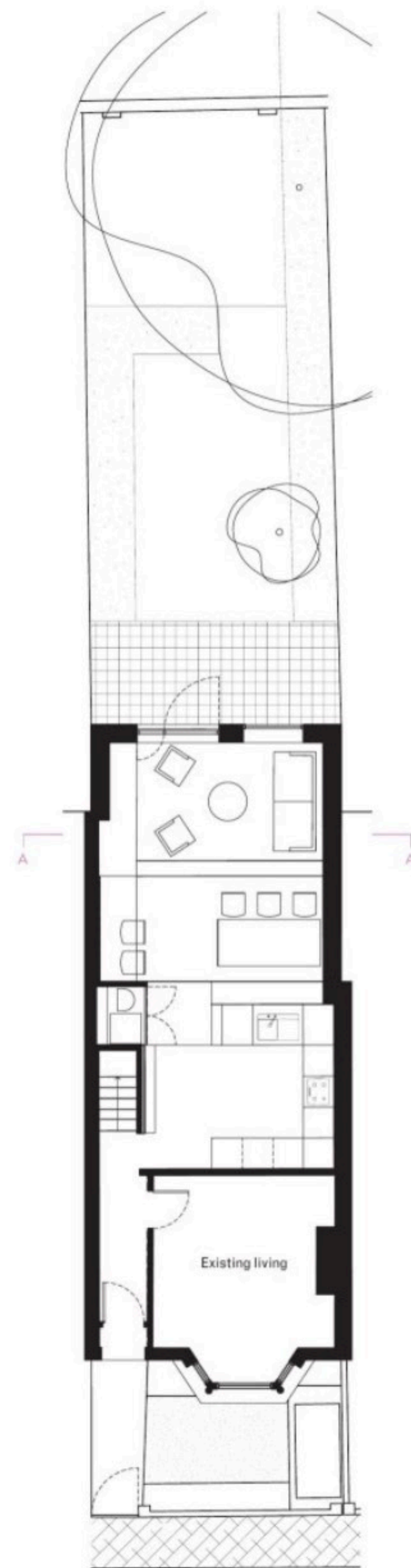






SECTION A-A

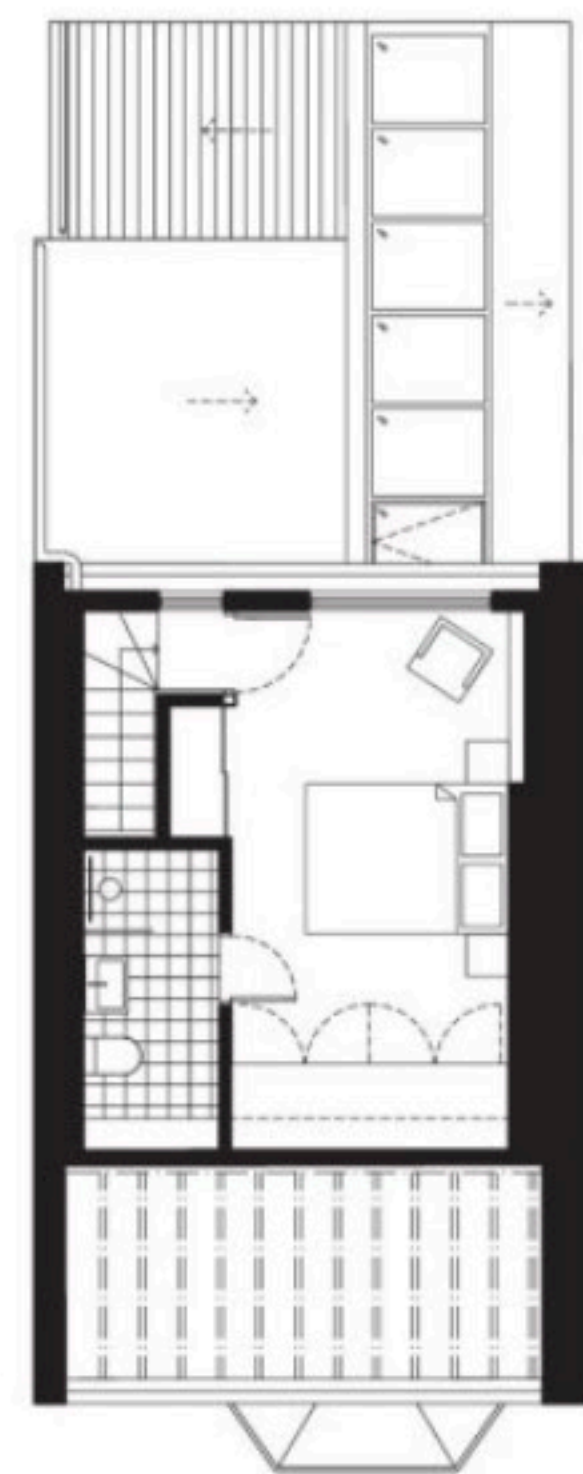
0 0.5m



GROUND FLOOR PLAN

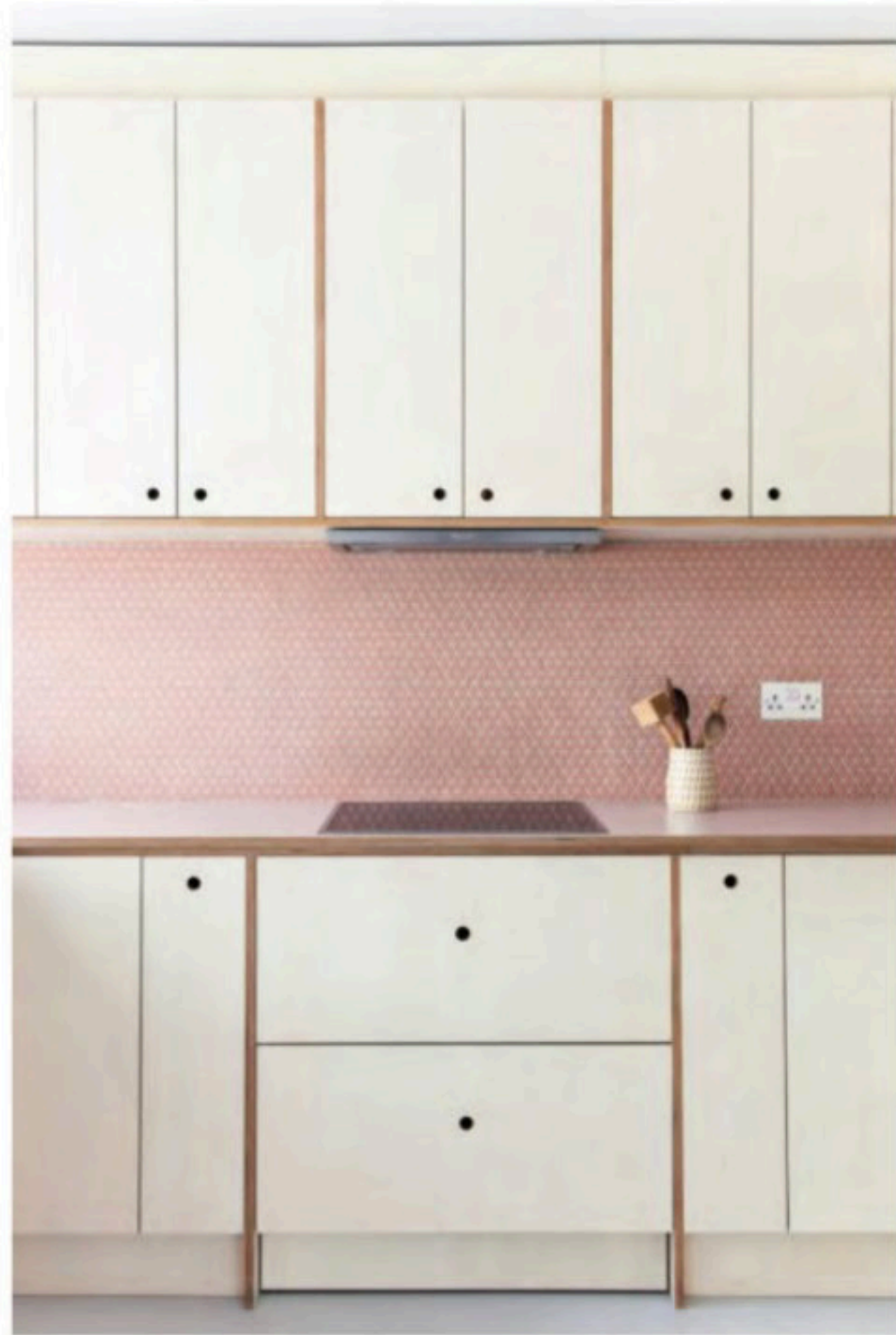


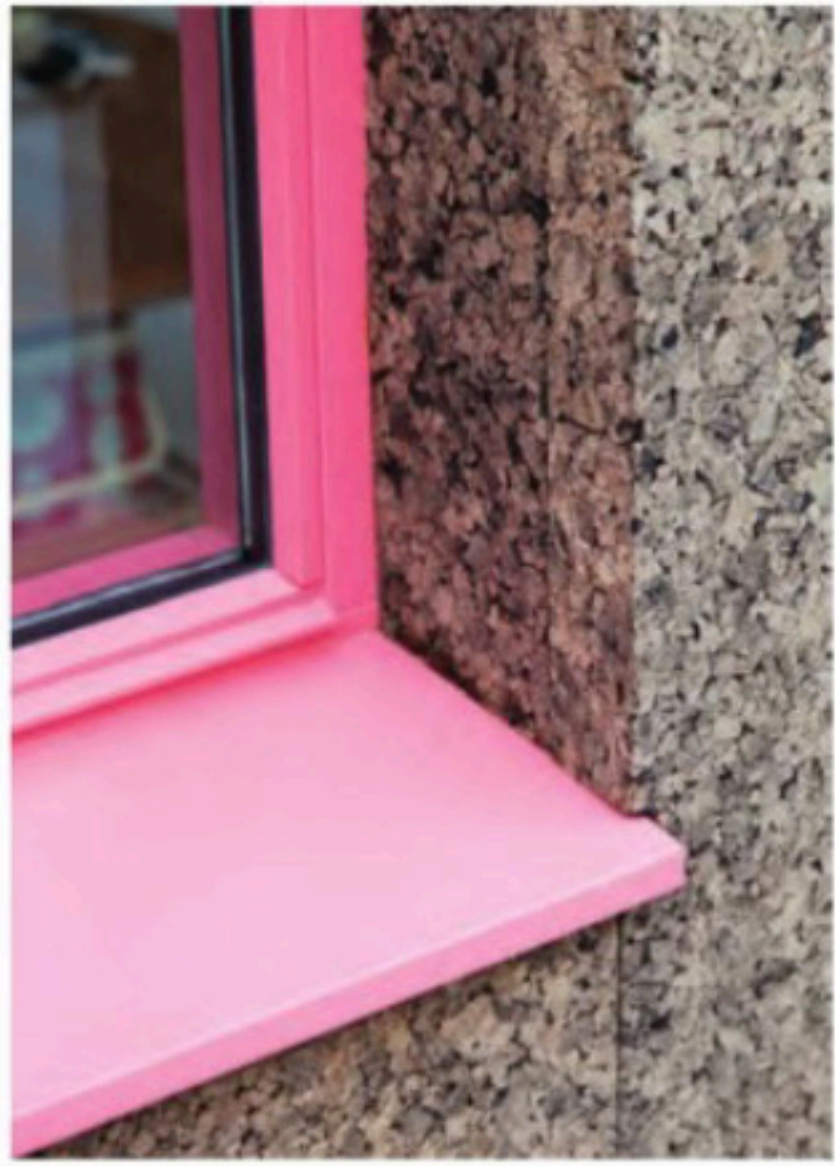
FIRST FLOOR PLAN



LOFT FLOOR PLAN

0 1m





SPECIFICATION DESCRIPTION

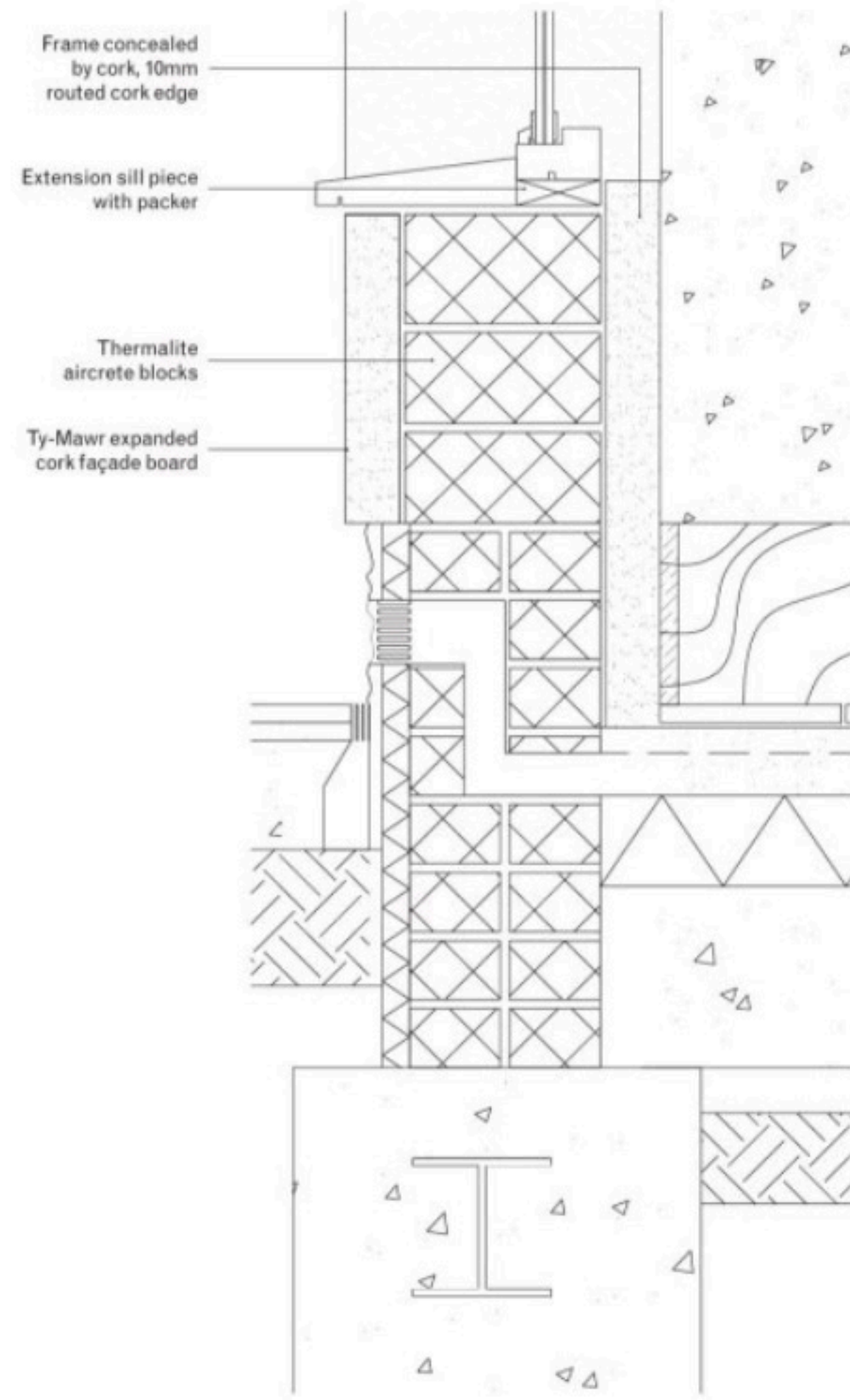
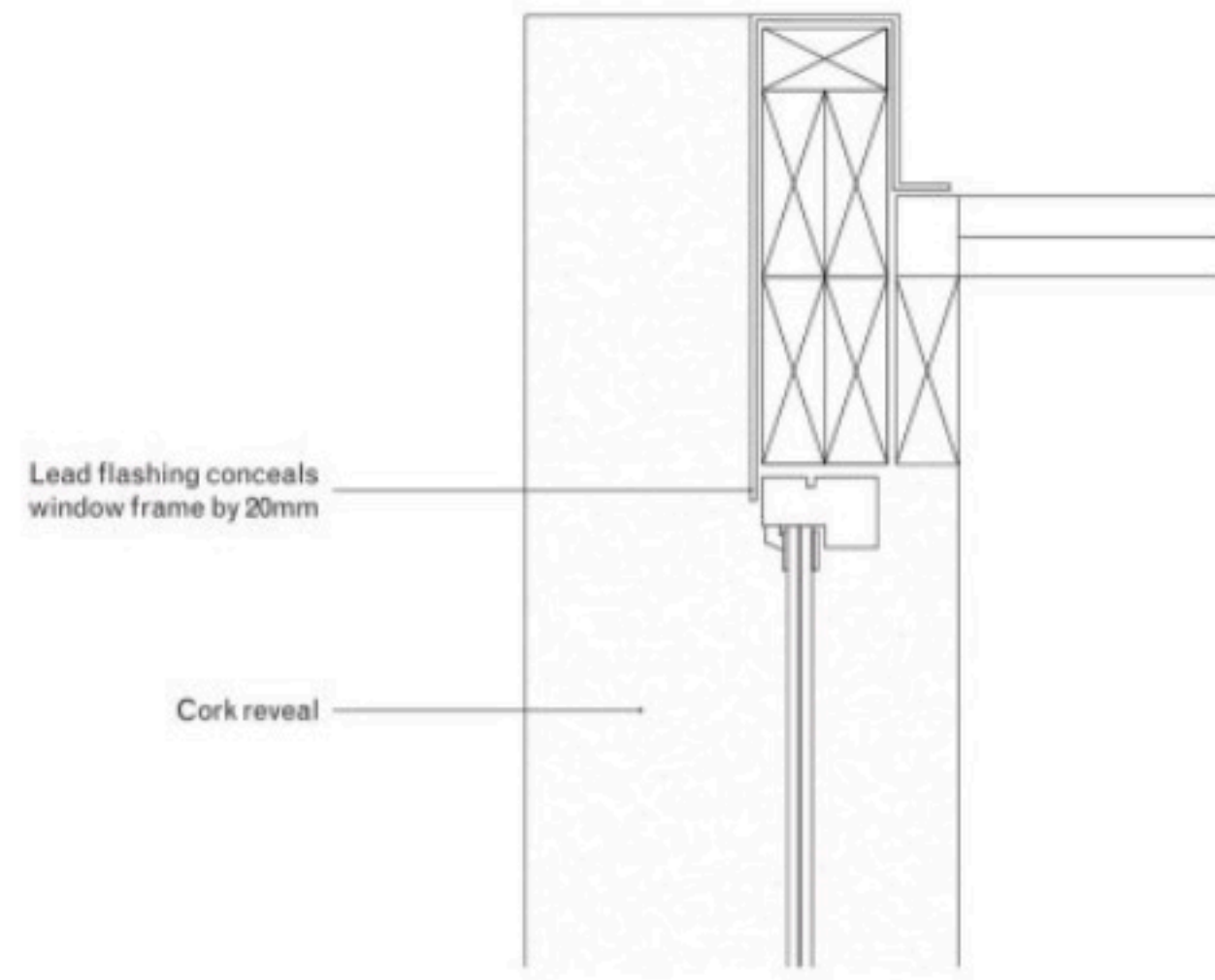
The rear extension's complex set of structural frameworks is rationalised with a simple and child-like pitched roof with a large pivot door to connect flush with the garden.

The cladding of the extension in natural cork shows our clients' love of colour and material. It is a bold and unusual choice that was supported by the local authority as a complementary match to the existing brickwork.

Cork is a sustainable material, naturally water-resistant, recyclable, and will weather to a silver-grey colour over time. It has inherent insulating properties, so we did not require any additional insulation on the external walls. Cork offers so much as a building material. It ticks all the boxes when it comes to thermal and acoustic performance but is also breathable, free from chemicals, synthetic resins and carcinogenic materials and creates a healthy environment inside the house. It seemed the obvious choice to expose it internally as well as externally.

The external cork is offset by bold coral-pink windows, also used at loft level. Pink is referenced throughout the interior of the house in different tones/hues and patterns including the new loft level with master suite and renovated first floor.

*Allie Mackinnon, project architect,
nimtim architects*

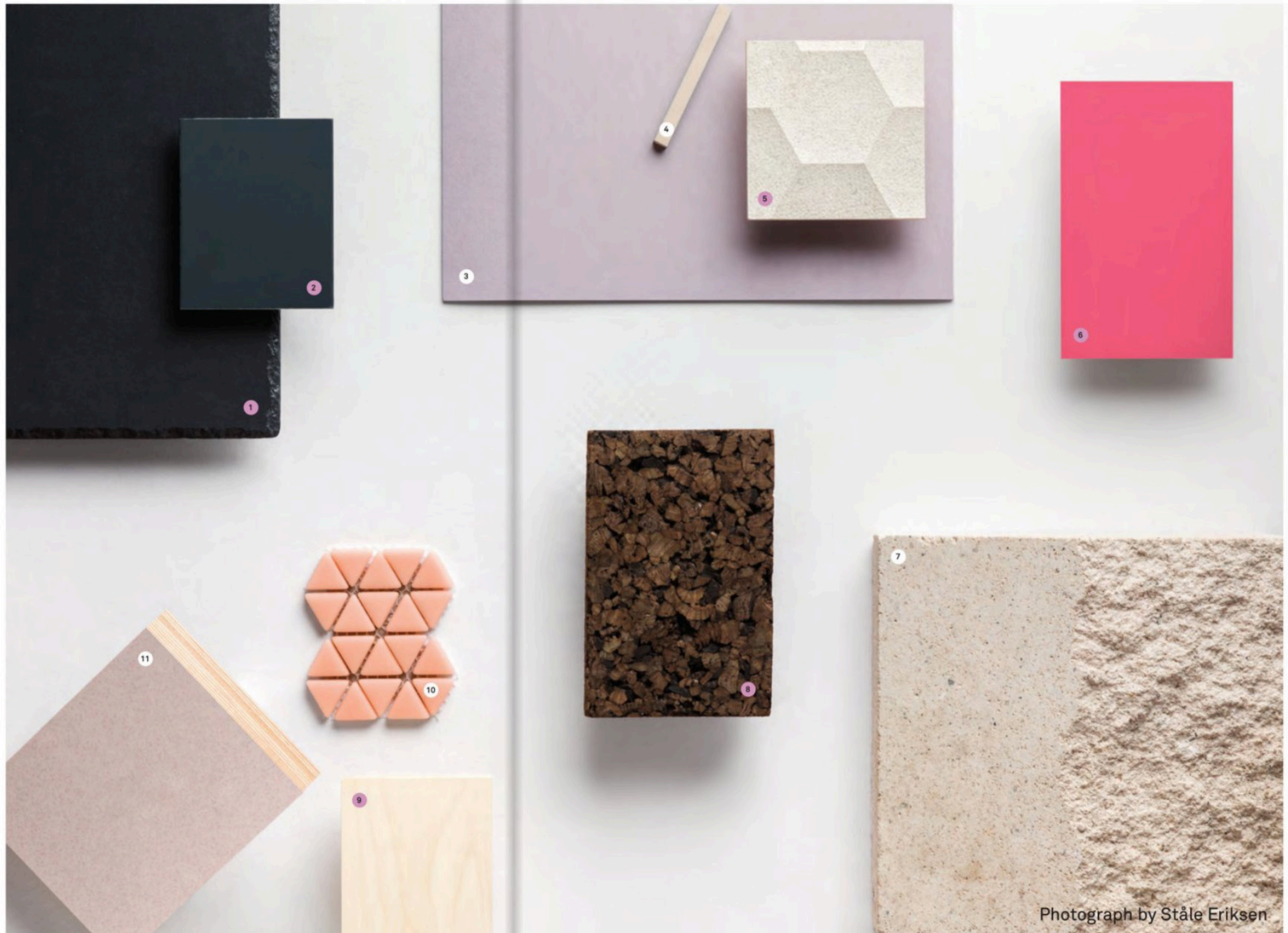


WINDOW REVEAL DETAIL SECTION

0 0.1m

SAMPLES BOARD

- 1. External dormer and roof tiles**
Marley Eternit Birkdale fibre cement slate tiles
eternit.co.uk
- 2. Rooflight**
Standard Patent Glazing Company timber rafterline system with RAL 7015 slate grey aluminium caps
patent-glazing.com
- 3. Bathroom flooring**
Forbo Marmoleum Walton in lilac
forbo.com
- 4. Tile grout**
Mapei Limestone No. 299
mapei.com
- 5. Bathroom wall tiles**
Domus Bera and Beren Six ceramic tiles
domusgroup.com
- 6. Door and window frames**
AJ & D Chapelhow redwood timber frames finished in RAL 3014 paint
ajdchapelhow.co.uk
- 7. External walls**
Thermalite Aircrete blocks sourced by contractor
- 8. External and internal cork cladding**
Ty-Mawr expanded cork façade boards
lime.org.uk
- 9. Joinery**
Birch plywood, finished in Auro white woodstain
auropaint.co.uk
- 10 Kitchen splashback**
Claybrook Studio Confiserie Blush triangular mosaic tiles
claybrookstudio.co.uk
- 11. Worktops**
Formica, Paloma Rose-faced plywood
formica.com



Photograph by Ståle Eriksen