



Tŷ-Mawr

Caring for buildings...Caring for the environment...Caring for health...

Spring 2010

Manufacturers & Suppliers of traditional & ecological building materials
Manwerthwyr a chyflenwyr deunydd adeiladu traddodiadol ac ecolegol

Products

Manufacturers & suppliers of:

- Traditional Fat Lime Mortars and Plasters.
- Limewashes and Pigments.
- **glaster®** - plasters and mortars.
- Lime Hemp Plasters.
- Limecrete (concrete alternative) floors.
- Tŷ-Mawr Thermafleeces® Insulation.
- Singleton Birch Hydraulic Lincolnshire Lime - the ONLY British Hydraulic Lime.
- Aglaia Plant-based Paints - including:
 - Natural Emulsions (internal wall paints).
 - Paints, glazes, oils and waxes for wood.
 - Paints for metalwork and radiators.
- Beec's Pure Mineral Paints.
- Building boards/plaster carriers including reed mats, reed boards, wood wool boards and woodfibre boards.
- Laths, wattle and battens.
- Tools and books.
- OSMO Wood Treatments.

Services

- Site visits or meetings with one of our Product Advisers.
- Product support (including NBS clauses).
- Established courses see back page for dates and for details of a 10% product discount for all course delegates in 2010!
- Product information days and RIBA accredited CPD seminars.
- Visits to Tŷ-Mawr for interested groups (by prior arrangement).
- Hire of the training centre.

Email info@lime.org.uk for more information.

Lime Hemp and glaster® products on show!

Tŷ-Mawr has a busy year of exhibitions ahead starting with the Surface Design Show in London from the 16th-18th of February.

Tŷ-Mawr will be displaying their glaster® range of products as well as their lime hemp insulating plaster.



Nigel Gervis, Operations Director said "we are pleased to be taking these products to the Surface Design Show in London. Renewable and recycled building materials are now very high on the green construction agenda, so it is a perfect time to be able to show off just what we have achieved in trying to improve the 'green' credentials of our lime plasters. Using hemp instead of aggregate in plaster brings all sorts of environmental benefits – it is a plant, so obviously absorbs carbon dioxide as it grows, but it is a low input plant so it does not require the use of herbicides or pesticides, or lots of water and it actually enriches the soil in which it grows. Excitingly, it is also a fantastic product to use giving really good results whilst adding insulation to our walls.

We actually launched our glaster® products at this show three years ago, which is our lime plaster made with recycled bottle glass; as a result we have been involved in some highly innovative projects, projects that were attracted by its aesthetic as well as its environmental credentials. We hope to get the same reaction again this year".

For an invitation to our Preview Evening, please email margaret.price@lime.org.uk

"It is disgraceful that less than 20% of our rubbish is recycled or composted in the UK. The UK glass recycling rate is among the lowest in Europe but 30 gallons of oil are saved for every tonne of glass which is recycled glass". FRIENDS OF THE EARTH.



Distribution warehouse: Unit 12, Brecon Enterprise Park, Brecon, Powys LD3 8BT Tel: 01874 611350 Fax: 01874 658502
Training: Tŷ-Mawr, Llangasty, Brecon, Powys LD3 7PJ Tel: 01874 658000 Fax: 01874 658502 www.lime.org.uk

Courtesy: M. Rosenthal, I. Berry

Natural Paint Ranges – Best Sellers!

Since the launch last summer of our Tŷ-Mawr mineral and plant-based paints, we have sold thousands of litres for specialist conservation projects, new builds as well as re-decoration. The best sellers are:

Mineral Masonry Paint Range (external)

Rock Salt, Talc, Topaz, Garnet, Limestone, Pumice, White Marble.

Natural Plant Emulsions (internal)

Sweet Cicely, Myddfai, Washington White, Goose Grey, Ochre, Daffodil Drive, Gooseberry Fool.

Traditional Limewash

Off-white, Yellow Ochre, Marigold, Copperas, Raw Sienna, Yellow Ochre Tint.

Call for a copy of the new colour charts!



NEW Earthborn Silicate Paints

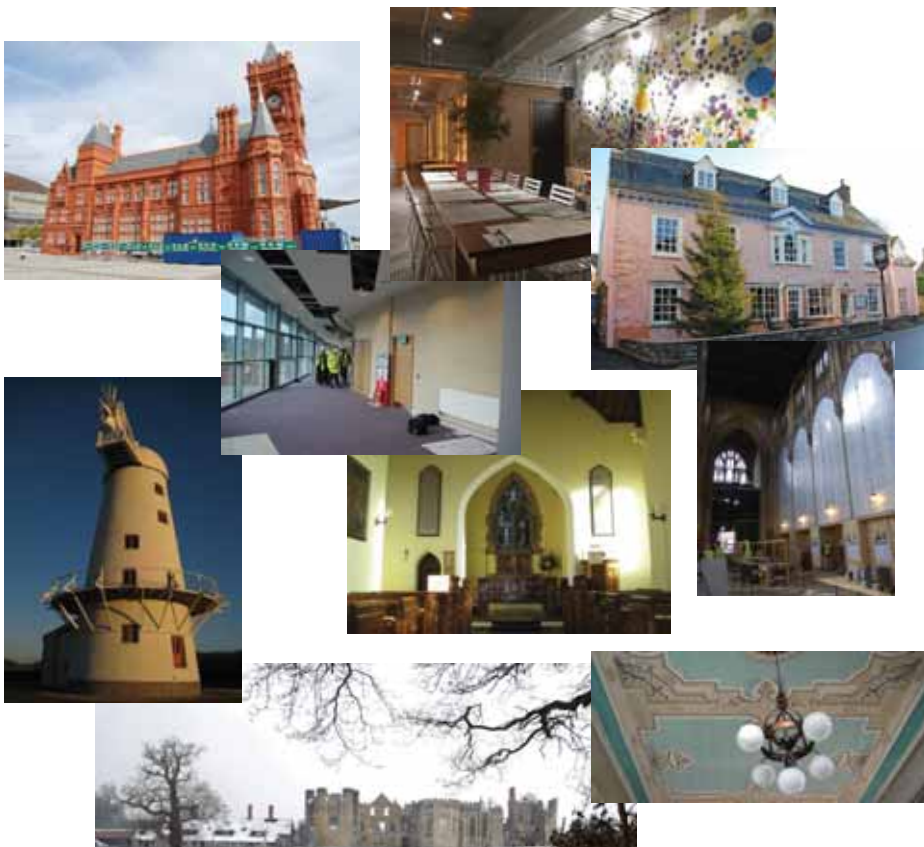
We have added the Earthborn Masonry Paint to our range of external paints. Earthborn is only suitable for mineral surfaces and cannot therefore be used over old painted surfaces (unless it is a mineral paint), call us if this is the case as we have other solutions!

This is a water based and VOC free paint, which allows walls to breathe. It is very hardwearing, water-repellent and can withstand severe weather! Hand painted colour charts are now available!



CASE STUDIES

We are proud to have worked with the many architects, clients and contractors who, like us, are striving to promote and encourage the use of more sympathetic and sustainable building materials on projects like those shown below – see our website for further information.



NEW Wood Products

Such is the extent of the interest in our natural wood paints, we have decided to introduce a wider range of products to suit every application and budget including:

OSMO Country Colour Wood Paint

Is an opaque, satin-matt wood finish for exterior (and interior) use of unsurpassed durability.



Country Colour is based on natural oils and is micro-porous, allowing the wood to breathe. It will not crack, flake, peel or blister. It is extremely weather and UV-resistant, water-repellent and moisture regulating. Available in the following standard colours or can be mixed to one of 186 RAL colours!



OSMO Floor Hard Wax Oil

Osmo Polyx®-Oil is a professional, clear, satin-matt or matt floor finish for all wooden floors (solid wood floors, laminated flooring, oriented strand-board). It can also be used on cork floors and for terracotta and other unglazed tiles. It is also well suited for the treatment of furniture surfaces (i.e. table tops). Call for further information.

Timber Fence Treatment



Osmo Fence and Garden Stain - will protect and enhance the wood of fencing and any other garden structure. It produces a satin-matt finish which highlights the texture and grain of the wood.

UV-Protection Oil

This product contains special, clear ingredients which do not allow UV rays to hit the wood surface and so prevents wood from greying whilst preserving the beauty of a woods natural colour and character. It is microporous and will not crack, flake, peel or blister.

For further information on paints or to order samples – email info@lime.org.uk

Natural insulation materials

Heating our homes is one of the most energy hungry things we do, so good insulation is one of the best ways to reduce our CARBON DIOXIDE emissions. If everyone insulated their solid wall buildings in the UK, it would save a massive 16 million tonnes of CO₂ - equivalent to the emissions of 2.7 million homes for a year. But, it is important to select a material that in itself does not add to environmental problems. There are many products made from natural or recycled materials now available, at Tŷ-Mawr we have expanded our range to include the following:

Tŷ-Mawr Thermafleece Sheep's Wool Insulation

We believe in using local resources wherever possible. In Wales there are 4 sheep to every person, so sheep's wool insulation was an obvious choice and because sheep's wool insulation is made from the coarser wool of hill sheep, the Welsh wool is ideal!

We have therefore established a unique partnership with Second Nature UK Ltd, who manufacture the Thermafleece range of products, they now produce the Welsh range exclusively for us.



PB20 Insulation – Now On Rolls!

Last year, we launched a hybrid insulation of wool and recycled polyester in a roll format. This offers a more economic alternative to the wool product and enables it to be compressed for transport, hence it offers transportation savings as well!

Please email technical@lime.org.uk if you would like any advice or calculations on build-ups.



Semi-rigid Woodfibre Insulation

We also stock the Woodfibre Insulation holzFlex 040 from HOMATHERM. It is a completely new insulating material that uses a process that has proved its' efficiency over decades. It is made from wood fibre, the result is a highly flexible, adaptable product that is environmentally friendly and is also incredibly simple to work with.

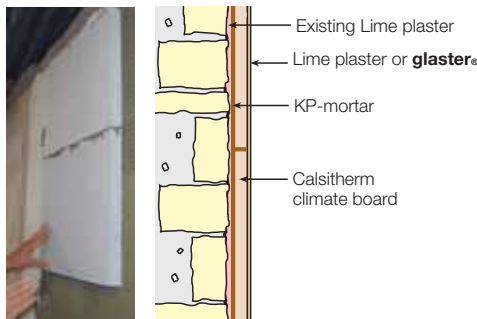
Boards

We also stock a wide range of boards that can either be used on their own or combined with our other materials to provide a solution for your thermal and/or acoustic insulation requirements. These materials are all compatible with 'breathing' building structures, they include:

NEW

Calsitherm Climate Board

Calcium silicate boards - have just arrived in the UK, these boards do not require studding out etc but can simply be applied directly to an existing lime plaster internally and then plastered with lime to maintain the breathability and improve the insulation of solid wall construction buildings.

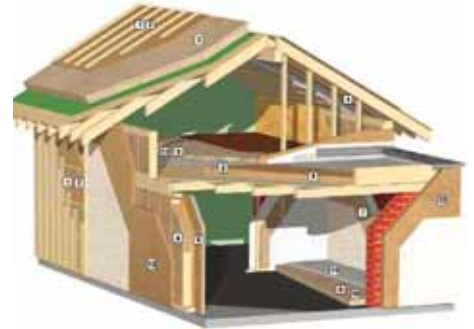


Simply applying 3cm of Calsitherm Climate Board on a 500mm solid stone wall can reduce heat loss by up to 50% while avoiding the risk of mould growth and condensation.

New build- timber-frame extension using our Welsh wool insulation, wood wool boards and glaster plaster.

Gutex Woodfibre Boards

We particularly like these boards as they are the only ones that we have found that are single ply and hence do not need to have layers 'glued' together. They also offer a complete range of products for all applications that are compatible with our other 'breathable' materials.



Wood Wool Boards

These boards are ideal lime plaster carriers, they can be combined with sheep's wool insulation for insulating solid walls internally or used for new timber-frame infill.

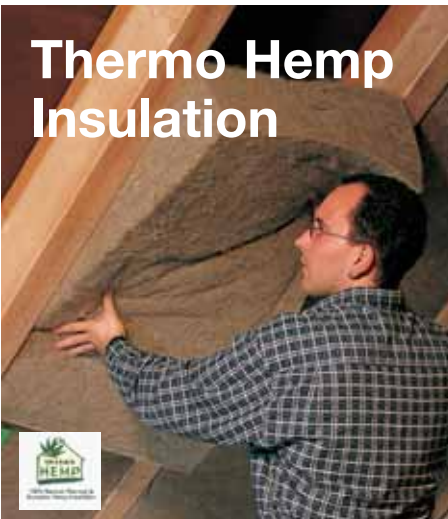


Landfill in Wales!

Why worry about the disposal of insulation?

Construction and demolition (C&D) waste is a big problem in Wales. The Environment Agency's trend data show no improvement on C&D waste being diverted from landfill in the last four years. Around 2.5 million tonnes of C&D waste were handled in 2007 by waste facilities in Wales. Nearly half of this waste was landfilled, and only eight years of landfill space remains in Wales.

We are committed to ensuring that our products are recyclable or biodegradable at the end of their useful lives to reduce the future environmental impact!



Thermo Hemp Insulation

Hemp insulation is made from the fibres of the hemp plant. It is therefore fully renewable and like other plants, absorbs carbon dioxide as it grows and uniquely enriches the soil – so it is better for the environment.

This insulation product is popular as it is 100% pollutant-free, ruling out any risk to health either in production or installation providing you with a totally natural & healthy living environment.

Thermo Hemp Insulation – Special Introductory offer!

We are offering 10% off the retail prices until the end of March 2010! Please use promotion code TH032010 or visit our website!



courses

at Tŷ-Mawr

Tŷ-Mawr has been running specialist courses in traditional and ecological building since 1996 on the site of their head office, formerly a working farm and still the home of the founders of Tŷ-Mawr Lime in the heart of the Brecon Beacons National Park. The newly restored grade 2* listed training centre was officially re-opened by Their Royal Highnesses, The Prince of Wales and Duchess of Cornwall in June 2009. Delegates attend from all over the world not only attracted by the quality of teaching but also the 'backdrop' – the on-going restoration of the whole farm complex provides an exemplar for what can be done using traditional and ecological materials and technologies.

Introduction to Lime - 11th March, 4th June, 2nd July, 2nd September

Lime Plastering - 12th March, 29th April, 11th June, 9th July, 12th-13th August (2 day course)

Introduction to Lime and Lime Plastering (2 day course) - 13th-14th May, 12th-13th August

Drystone Walling - 17th-18th April (2 day course), 18th June, 7th-8th August (2 day course), 15th October

Traditional and Ecological Paints and Finishes - 10th June

Targetting - 2nd October

Decorative Plasterwork – 2nd October

Lime and Traditional Brickwork – tbc

Insulation and Energy Efficiency in Traditional Buildings – tbc

We also design and deliver training tailored to meet individual requirements, either at our training centre or on site. Over the last year clients have included staff from private companies, contractors, developers, Local Authorities, The National Trust, British Waterways and educational establishments such as the Welsh School of Architecture and the University of Bath. We also offer a RIBA accredited information seminar 'Lime - traditional building products for today's world' which we deliver all over the UK. Please e-mail training@lime.org.uk for further information.

All delegates attending lime courses at Tŷ-Mawr will get a free copy of "The Lime Handbook" (rrp £15.00).

Special Offer for 2010 – we would like to offer all those who attend our courses a 10% discount off their lime, insulation and paint products if ordered within twelve months of attending a course.

Ethical Award!

Tŷ-Mawr is delighted to announce their successful accreditation by the The Ethical Company Organisation.

The Ethical Accreditation Scheme is designed to research and assess companies in a number of areas including:-

- Environment: environmental reporting; pollution; other environmental issues.
- Animals: animal testing; factory farming; other animal rights.
- People: social responsibility.

Tŷ-Mawr joins other accredited organisations including: The Environmental Transport Association (ETA), Green Energy, Green People, The Green Stationery Company, Highland Spring, Holz Toys, The Natural Curtain Company, Natural Organic Soap, Organic Farm Foods, Organico and OSMO.



Joyce Gervis, Managing Director of Tŷ-Mawr said, "we are thrilled with the accreditation. This sort of scheme encourages us all to think harder about not only the products we buy but the organisations and businesses we choose to buy them from. We are really proud to be part of the scheme and to be the first green building materials supplier to be accredited".



The Wales Green List

Nigel and Joyce Gervis are extremely proud to have been named as one of the 52 sustainable development champions in Wales' first annual Green List at the end of last year.

The Wales Green List celebrates individuals making Wales a better and more sustainable place to live. It's the first list of its kind in Wales, bringing together the different elements of sustainable development – environmental, economic and social – in one award. Included on the Wales Green List 2009 are chief executives in private companies, SME managing directors, politicians, parents, campaigners, poets, musicians and many more. Well-known names on list include Jane Davidson, Minister for Environment, Sustainability and Housing and Gillian Clarke, National Poet of Wales.

Helen Nelson, Director of Cynnal Cymru - Sustain Wales said: "The first ever Wales Green List highlights the fantastic efforts of some of our unsung heroes who are helping to create a brighter future for Wales. Every single person on the list has an inspirational story to tell and I'm sure their efforts will inspire others to take action too."



Quality Counts!



Tŷ-Mawr finished 2009 with their fourth successful quality inspection and their first under

the new standard ISO9001:2008. The standard covers the manufacturing site, the Training centre as well as the Distribution Warehouse and covers everything from manufacturing procedures, mortar analysis, limecrete floor design, paint mixing as well as order processing, goods in, training and internal staff review and training. Ensuring that the business is delivering quality consistently on all fronts!



NEW STOCKIST!



We are pleased to announce that Richard Williams (Deganwy) Ltd are now stocking our products in North Wales. They are currently stocking:

- Premixed fat-lime scratch and finish plasters and mortars
- Tŷ-Mawr wood wool boards
- Lincolnshire hydraulic lime
- Hemp lime plasters
- Tŷ-Mawr Thermafleece Welsh wool insulation

This is in addition to Ned Scharer in Betws-y-Coed. For a full list of distributors and contact details, see www.lime.org.uk

Limecrete floors meet with approval!



We are pleased to say that interest in our insulated limecrete floors has reached unprecedented levels despite the recession! We are designing and/or supplying in excess of 40 floors per month and have been pleased to supply materials to some prestigious projects in the second half of 2009 including Cowdray Estate (West Sussex), Strawberry Hill House (Bucks), School Cottage & No.198 West Street (National Trust), Hereford Cathedral (Capps and Capps), St Helliers Parish Church (Jersey) as well as many private developments. We are continuing to spread the word, delivering talks and CPDs in 2009 for The Society for the Protection of Ancient Buildings, The Church in Wales, The Diocese of Salisbury and also The Diocese of Llandaff, Cardiff and are assisting with a limecrete floor day for South Somerset Council this Spring! To book your cpd, email cpd@lime.org.uk